

Wyoming History PowerPoint Project – Teacher’s Notes

1) Preparation

All materials are available at www.laramie1.k12.wy.us/integration. Using the navigation bar on the left of the screen choose, *Social Studies* → then scroll down to find *4th Grade* → then *Wyoming History Links*.

The Wyoming Link pages contain most of the material that a student will need to complete this PowerPoint project. The link with the blue star will take students to images and other resources for this project. Other traditional materials may be used as well.



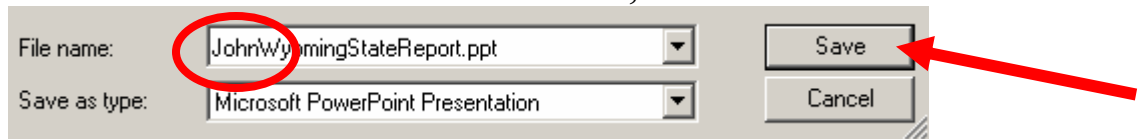
[Image Resources for Wyoming History PowerPoint](#)

In order to begin this project, students will need to copy the Wyoming History PowerPoint to their own file. This is the simple procedure:

- Locate this area of the [Wyoming History Links](#) page.

■ 4th Grade Assessment PowerPoint [See info on downloading files]
■ Wyoming State Report -- Pdf format
■ Wyoming State Report -- PowerPoint format
■ Image Resources for Wyoming History PowerPoint
■ PowerPoint Tutorial
■ Wyoming Time-Line documents
PDF - Wyoming Timeline
Word Doc. - Wyoming Timeline
■ All activities for this 4th Grade PowerPoint Activity are taken from this [worksheet about Wyoming](#).
■ WY History License Plate Template (PDF) Print one and copy for your class to complete Wyoming History PowerPoint slide 12.

- The students will **right** click the mouse and choose *Save Target As...*
- The students will then choose where the file will be saved. (Usually to their folder on the Network **H** or **Z** drive.)
- The student will add their name to the file, and save.



2) Working on the Wyoming State Report Drawing

Slide 1: This is the title page of the project. The student will highlight *Your Name* and replace it with their own first and last name. The word *Your* in Your School will be highlighted and their own school name added. The correct date will replace *Date*. **Tip:** Use the insert drop down menu to insert today's date.

A graphic may be added to this page—the Wyoming state seal from the Image Resources Webpage works well. The image is added by the Copy/Paste method. Save work.

Slide 2: On this slide a national map is added using the Copy/Paste method. The map can be found at the [Image Resources](#) link.

Once the map has been added to Slide 2, the Drawing toolbar will be used to add a circle around Wyoming on the national map. Using the *FormatAutoShape* function by right clicking on the circle—format color/line choices and remove *Fill*. The Drawing toolbar is used again to add an arrow to the map, pointing to Wyoming. Right

click to *FormatAutoShape* for color and line choices.
Save work.

Slide 3: This slide contains facts about Wyoming. Using the *Copy/Paste* method information will be added to this slide, using the State of [Wyoming Kid's Page](#) from the Internet. The students will be highlighting information and copy/paste is into their own PowerPoint, making sure to *Save* often. The Map on Slide 2 can be used for *Neighboring States* information. The Average Temperature is found in **My First Pocket Guide Wyoming.** The degree sign is added using *Insert* → *Symbol* menus. *Save* work.

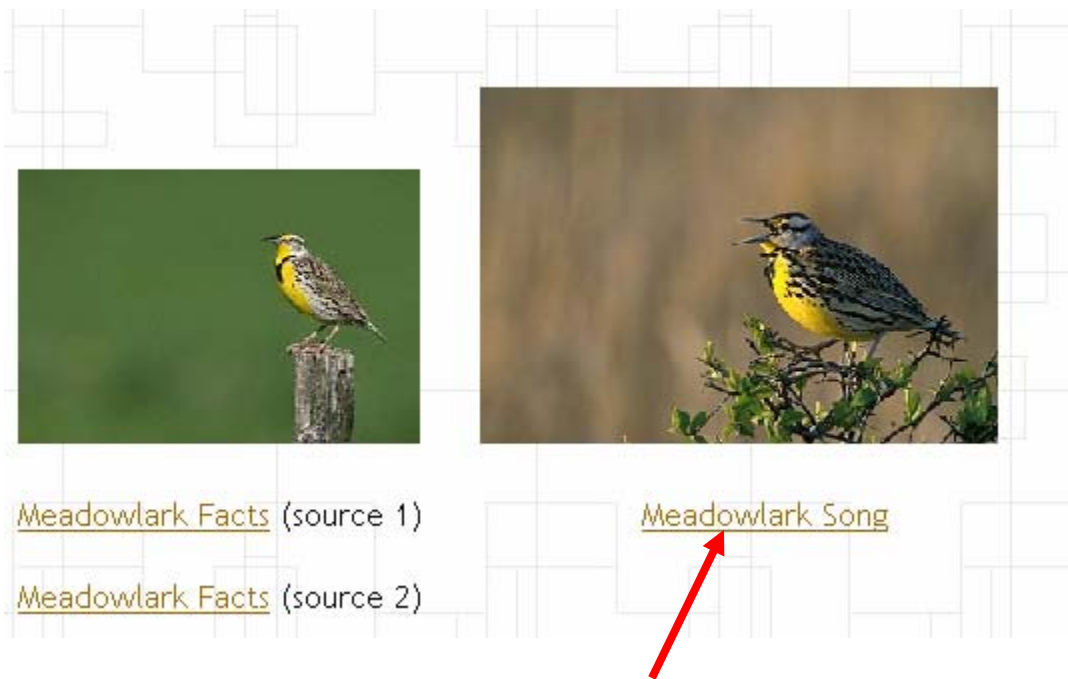
Slide 4: Information on this slide can be typed or added using Copy/Paste method. At this point, demonstrate adding a graphic to this page. Clipart is introduced and pictures from the [Image Resources](#) page are demonstrated. *Save Work.*

Slide 5: Information is added to this page. Page 57 From Sea to Shining Sea: Wyoming is an excellent resource. Students are encouraged to add animal pictures from the [Image Resources](#) page. Demonstrate adding more than one picture and different layout ideas. *Save work.*

Slide 6: Using information about the [Wyoming Governor](#) from the State of Wyoming Kid's Page. Copy/Paste the governor's picture, name, and bulleted information for this slide. Students should add two more facts in addition to the governor's name. *Save work.*

Slide 7: Add picture of Meadowlark from [Image Resources](#) page using Copy/Paste method. There are several Meadowlark picture from which to choose.

Next, add the Meadowlark Song from the Image Resources page using this step-by-step procedure.



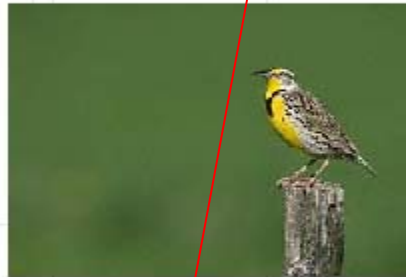
- Right click on the Meadowlark Song link
→click *SaveTargetAs...* →Choose location (Network Drive **H** or **Z**)→ Click Save.
- Using PowerPoint Slide 6, open *Insert* menu and choose *Movies and Sounds*→*Sound from File* (Students go to their H or Z drive)→ the file is named **Weme.wav**. Highlight it and click *Insert*. A message will appear on the screen and click **yes**—this will make the sound play automatically.

TIP: To see if it works the PowerPoint program must be in Show mode. Click the **Show** button at the lower left of the PowerPoint window..



****To go back to the PowerPoint program and work pre the ESC key.**

Students will use Meadowlark Facts Source 1 or 2 to add information to the meadowlark slide. Five (5) informational facts should be added with bullets. The students may type or use the Copy/Paste method and edit.



Meadowlark Facts (source 1)

Meadowlark Facts (source 2)



Meadowlark Song

Slide 8: Students will add the State Motto using the *WordArt* function. This function button is located on the drawing toolbar at the bottom of the PPT screen. Demonstrate how to use WordArt and remind students to Save Work.

Slide 9: Copy/Paste the Wyoming State Flag from [Image Resources](#) page.

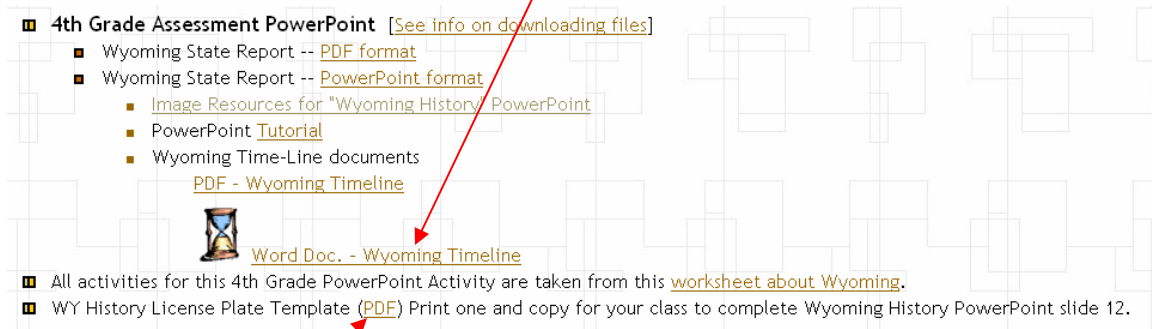
- On the text side of the slide, place the cursor behind the line *The colors of Wyoming's flag are:*
- Have the students press the enter key and then the TAB key. This should move the bullet and change its appearance. Make

sure that the bullet button is turned on, on the button bar.

- Have students type the word Red→enter, White→enter, Blue→enter. Demonstrate how the Font color can be changed. (Font is located in the *Format* menu.) White can be achieved by clicking emboss, do not change the color to white or it will disappear.

Slide10: This slide is a written exercise about a Wyoming figure in history. A photograph should be added to this page and the students should write at least 5 sentences about their Wyoming Hero. It is a good idea to demonstrate an internet search and also show links on the Wyoming Kid's page. Save work.

Slide 11: The mini-timeline may be typed or created using the Copy/Paste method. A document in Word format is located on the [Wyoming History Links](#) page. It can be opened by clicking on the link. A network box may appear—click Cancel, and the document will be ready to use. Students can highlight lines and copy/paste. **Tip:** You may want students to find information from 5 different decades.



Slide 12: The student will create their own Wyoming License plate. The PDF template for this activity is on the Wyoming History Link page. Students can do this activity in their classroom and then the artwork is scanned into a file for them to retrieve. Save work.

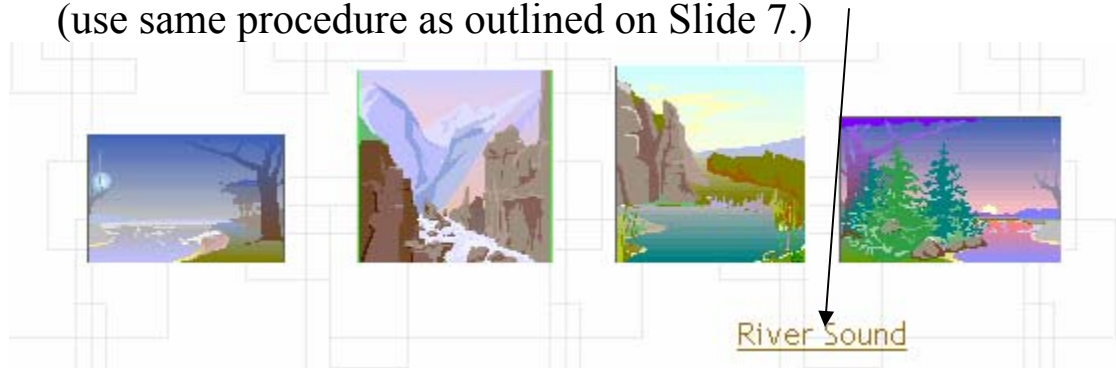
Slide 13: Wyoming is special because...is a written exercise. The student will write a paragraph about 8 sentences in length. Clipart or pictures are required. Save work.

Slide 14: Students will list 5 places that someone visiting *must* see. Clipart/pictures must be added. Show students how to change font color within a sentence for effect. Save work.

Slide 15/16: These slides will be created by the student using information from the Internet or in a traditional manner. The **From Sea to Shining Sea-Wyoming** book has information on Agriculture and Mining. Demonstrate how to put these pages together. Clipart/Picture required. Save Work.

Slide 17: The student will create this slide step-by-step with the teacher.

- The slide will be titled **Wyoming Rivers.**
- The format of the slide will be changed. Use the *Format* menu → Slide Layout. Choose the slide that has two columns of bullets.
- Using a Wyoming map-pg. 60 **From Sea to Shining Sea-Wyoming** has a good one. Students will find and enter 10 rivers with correct spelling and capitalization.
- Together add the river sound from Image Resources page (use same procedure as outlined on Slide 7.)



- There are some small clipart choices for this page, if the students wish to use them. Students may also search clipart for a choice.

Slide 18/19/20: Students may complete these slides independently.

3) Saving the Completed Project

Students should leave a finished copy of their project in their own folder. They should also save a copy of their project in a folder on the Network **I** drive.

Each teacher has or can request to have a Student Drop Box created on the **I** drive. The Student Drop Box gives the teacher access to student documents or students can have access to documents created by their teacher.

Students can also print their PowerPoint document in many forms.